



Greater Brighton Economic Board

Investment Programme Update Report

July 2021

Contents

Item		
1	Adur Civic Centre – Shoreham	Page 3
2	Burgess Hill Strategic Growth Programme	Page 4
3	Circus Street- Brighton	Page 6
4	Decoy Farm - Worthing	Page 7
5	Digital Catapult- Brighton	Page 8
6	Black Rock	Page 9
7	Heritage Centre Stage - Brighton	Page 10
8	New England House - Brighton	Page 11
9	New Monks Farm – Shoreham By Sea	Page 12
10	Plus X - Brighton	Page 13
11	Railway Quay - Newhaven	Page 14
12	Springman House - Lewes	Page 15
13	Teville Gate - Worthing	Page 16
14	Union Place - Worthing	Page 17
15	Valley Gardens - Brighton	Page 18
16	Western Harbour Arm – Shoreham-By-Sea	Page 19
17	Newhaven Flood Alleviation Scheme	Page 20
18	Port Access Road Newhaven	Page 21



Adur Civic Centre – Shoreham



Funding (all years)

Total LGF Funding	£1.71m
Total Public Funding	£0.0m
Total Private Funding	£9.89m
Total Other Funding	£0.00m
Total Funding	£11.60m

Outputs

Phase 1 North Site -30,000sqft of employment space

Phase 2 South Site – 987sqm of employment space and 171 residential units

What happened in the last period?

No update has been received in 2021. The last report is as follows:

Phase 2: Public consultation on proposed development by Hyde Housing took place on 20/02/2020 and detailed design work is underway with a view to the planning application being submitted in Summer 2020.

Issues have arisen from Hyde Housing due to Covid19 and will delay exchange and submission of the planning application.

Target Milestones (Phase 2)

Planning Application: Spring 2021

Planning Determined: Autumn 2021

Start on site: Spring 2022

Completion: by April 2024 (Homes England deadline)

Aims & Objectives

Adur District Council have led on the development of a two phase scheme for the former Council offices in Shoreham. Phase 1 involved the development of a 30,000 sqft (gross) office building which is now complete and let to local business Focus Group following £9.89m of Council investment.

For Phase 2 the Council have identified Hyde Housing as the preferred bidder for the site (Hyde Housing) and are working to finalise contracts. A planning application is anticipated in Spring 2020 for 173 homes (100% affordable in line with Hyde Housing’s strategic partnership with Homes England) and ground floor commercial space.

Key Facts

Delivery Partners: Adur District Council. Willmott Dixon, Hyde Housing Group

Burgess Hill Strategic Growth Programme



Artist's impression

Aims & Objectives

The programme will deliver transformative change to the town, secure major growth and significant improvements in housing, jobs, infrastructure, and social and community facilities. To support the programme the following grant funding has been secured:

- **£17 million** from the Local Growth Fund (LGF) to support A2300 corridor improvements comprising an upgrade to a dual carriageway, junction improvements, and the provision of a footway and cycleway linking to the National Cycle Network.
- **£10.9 million** LGF funding for a Place and Connectivity package of sustainable transport schemes including improvements to Burgess Hill and Wivelsfield railway stations, public realm improvements, and an inter-urban cycle route between Haywards Heath and Burgess Hill.
- **£4 million** LGF and a further **£6.5 million** Housing Infrastructure Fund (HIF) to improve the Goddard's Green Waste Water Treatment works, unlocking land to develop a further 256 homes.
- Up to **£2.2 million** from the Government's Local Full Fibre Network fund and **£2 million** LGF and **£1.6 million** retained business rates to support the implementation of new digital infrastructure for Burgess Hill which in turn will stimulate the market for internet service providers.
- **£165k** from One Public Estate for design and feasibility studies to redevelop 'The Brow' and land adjacent to Burgess Hill Station.
- **£1 million** Access for All funding to improve accessibility at Wivelsfield Station.

Key Facts

Delivery Partners: Mid Sussex District Council, Homes England, West Sussex CC, Burgess Hill Town Council, Coast to Capital, Department of Transport, and developers.

Funding (all years)

LGF Funding	£33.9m
Homes England funding	£370.5m
DCMS & other digital funding	£3.8m
OPE Funding	£165k
Access for All	£1.0m
WSCC Funding	£3.34m
MSDC Funding	£3.69m
Total Public Funding	£416.39m
Total Private Investment	£643.3m
Total Funding	£1,059.7m

Following their acquisition of the Northern Arc land parcels, the Council has an approved Infrastructure Delivery Plan (IDP) with Homes England which confirms an investment of £162m in strategic infrastructure.

Outputs

5,000 new homes, a Science and Technology Park (up to 100,000m² employment space), two business parks, 15,000 new jobs (including construction jobs), a major town centre regeneration (offering retail space, commercial leisure space including a cinema and a bowling alley, a hotel as well as new homes), improvements to the A2300 corridor, a package of public realm and sustainable transport schemes, new schools, increased GP capacity, improved leisure facilities, full-fibre digital infrastructure.

What happened in the last period?

Town Centre Regeneration: Completion of the S106 agreement is imminent which will allow the issuing of planning permission for the redevelopment of the Martlets Shopping Centre.

Northern Arc: Work is continuing on site with housebuilder Countryside Properties. Work on both the Eastern Bridge and Link Road and the Western Link Road is set to continue, with the whole on these links scheduled for completion by the end of 2021. Homes England progressing the feasibility for the first primary school on the site. Planning



application has now been received for the pedestrian and cycle bridge that will link Freeks Farm with the eastern neighbourhood centre

Place and Connectivity: Work continues delivery of the first of the phase 1 schemes including public art and other public realm improvements to the underpass at Wivelsfield Railway station. Detailed design work continues for highway improvements at Burgess Hill and Wivelsfield Stations, public realm improvements for Church Walk / Church Road, and access & connectivity improvements for Victoria Business Park. Delivery continues all Green Link (66% complete, 2.9km/4.35km) and Green Circle routes (50% complete, 3.4km/7km).

A2300 corridor improvements: Construction began in spring 2020 and is progressing to programme (Northern carriageway completion date anticipated for Summer 2021; both carriageways anticipated to be completed by Winter 2021).

Employment space, The Hub: The second phase of development (a 5,000m² warehouse for Roche Diagnostics) was completed in early February. Outline planning permission for the remaining 40,000m² has been approved, and issued.

Digital Infrastructure: Works to implement the Digital Infrastructure across and around Burgess Hill, including a southern link to Brighton and a northern link via Horsham to Crawley, are well progressed. The Local Full Fibre Network (LFFN) project has now been delivered totalling 15km of dark fibre and the Burgess Hill Fibre Exchange, with work on the Converged Fibre Connectivity Project continuing for completion in July 2021.

One public estate (OPE) 7: The Brow - redevelopment of an extended Brow site in Burgess Hill will provide enhanced accommodation for the emergency and primary care services and to create space for 440 new homes (led by WSCC). Consultants Faithful and Gould have completed a draft viability study which is currently being reviewed alongside engagement and discussion with other stakeholders.

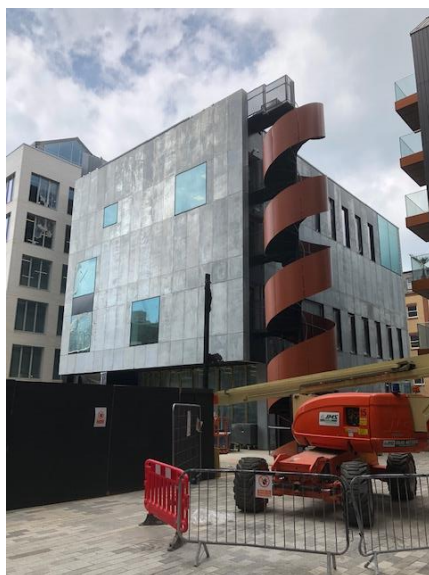
Land adjacent to Burgess Hill station - Officers are progressing to agree an engagement strategy with the other key stakeholders, Network Rail and The Arch Company (the principal land-owner at the site). Provisional approval of an initial OPE Phase 8 funding top up award of £50k has been given, split 50/50 between grant and loan funding. Network Rail have also committed an initial £25k funding to the next stage of the work programme.

Goddards Green Waste Water Treatment Works: Phase 1 of the project has been completed delivering most of the odour reduction benefits. All the £4m LGF-funding has

been spent, and the project is now continuing at pace funded through the £6.54m HIF grant.

Target Milestones — Various (project-specific).

Circus Street – Brighton



The Dance Space



Western edge of development and public realm works, Circus Street

The Dance Space provide a new HQ for South East Dance as well as 3 studios (one for public performances) and office space for other cultural industries. The growing artistic community in Brighton has no dedicated space for dance and it is estimated that 60,000 people will use the space every year. It will become a cultural and community hub, where people gather to collaborate, participate, watch and learn.

Key Facts

Delivery Partners: U+I plc (Cathedral Brighton), Brighton & Hove City Council

Funding (all years)

Total LGF Funding	£2.70m
Total Public Funding	£0.40m
Total Private Funding	£106.57m
Total Other Funding	£0.00m
Total Funding	£109.67m

Outputs

142 new homes; 387 additional jobs and 232 net additional jobs after displacement and substitution; 30,000 sq ft. office building; 450 student accommodation bed spaces; “The Dance Space” (dance studios, offices, public performance space and HQ for South East Dance); start-up workshops, retail units and restaurant; public realm to include a square and landscaped courtyards.

What happened in the last period?

Substantial progress has been made on both the office the office block and The Dance Space (the final 2 buildings to be completed) as well as offsite and onsite public realm works.

Target Milestones End Date: Summer 2021

Aims & Objectives

The mix of residential, business, education and cultural occupiers on the site will bring a wide variety of people into the area, benefitting existing local businesses. Economic impact studies indicate that the development will create approximately 232 predominantly local jobs. It will generate £1 million in council tax, new business rates contributions and new homes bonuses. It would encourage student and new resident population spending in and around the site and would boost the local economy by more than £10m each year due to a multiplier effect.

The main office building will be a new centre for innovation and enterprise that will maximise the potential for linking the University’s research functions and private organisations that will cohabit in the building. This Innovation Hub will, in turn, create and support fledgling new business in the City and generate opportunities for students, graduates and university staff to work alongside SMEs and larger organisations.

Decoy Farm - Worthing



Outputs

- **Phase 1:** To remediate the 7 hectare former landfill site, unlocking it for commercial development.
- **Phase 2:** To deliver up to 13,536sqm of employment floorspace by developing new commercial units to meet existing and future industrial demand.

What happened in the last period?

- Remediation of the landfill completed to programme and to budget.
- Remediation works certified as complete as at 26 March 2021.
- Remediation contractor demobilisation and handover of Decoy Farm back to Worthing Borough Council completed.
- The Phase 1 output to remediate Decoy Farm and bring 7 hectares of land back into use has been achieved. Full use of Local Growth Funding has enabled the site to be unlocked, ready for commercial development.

Disposal/Development Strategy

- Phase 2 of the development and output to deliver employment floorspace is progressing well.
- A Strategic Outline Case for Decoy Farm is complete.
- A draft Outline Business Case has been prepared.
- Planning consultation events have been held and an outline planning application is in progress.

Target Milestones

- Spring 2021: Phase 1 - remediation of the former landfill site complete.
- Full use of LEP funding achieved by the 31st March 2021 deadline.
- Summer 2021: Phase 2 – Strategic Outline Case and draft Outline Business Case to be completed and presented to the Councils Joint Strategic Committee meeting in July 2021.

Funding (all years)

Total LGF Funding	£0.50m
Total Public Funding	£1.00m

Aims and Objectives

An ambitious plan to upgrade an environmentally challenging but sizable plot of allocated employment land that has stood unused for over three decades. The completed project will boost employment opportunities and economic performance in the entire Coast to Capital LEP region.

Funding (all years)

Total LGF Funding	£4.84m
Total Public Funding	£4.84m
Total Private Funding	£15m
Total Funding	£25m

Key Facts

Delivery Partners: Worthing Borough Council, West Sussex County Council, Private Sector, Coast to Capital LEP.

Total Private Funding	£0.50m
Total Other Funding	£0.00m
Total Funding	£2.00m

Outputs

10,000 businesses receiving information about emerging technology opportunities; 1,000 businesses receiving non-financial support; 250 businesses assisted to cooperate with universities and other research institutions; 100 businesses supported to introduce new products or services to the market or the firm; 30 hackathons, boot-camps or pit-stops; and 10 in-depth collaborative R+D projects.

What happened in the last period?

The primary focus of activity for the last period, and will be for the rest of 2021 is the 5G Festival - the DCMS-supported, Digital Catapult-led programme with the music industry, whose regional partners are Brighton Dome & Festival and Wired Sussex.

The world’s first 5G-powered music festival is due to take place in March 2022. It will bring together virtually music venues in different cities including Brighton.

Work is underway on the technical development of various aspects of the project including distributed live and as-live music concerts, virtual versions of music venues, and enhanced fan experiences. A series of workshops for the regional music industry will run alongside these technology programmes.

Aligned with that project is the Research and Innovation Fibre Ring (RIFR), which enables us to integrate Brighton Digital Exchange into the 5G Festival activity, and potentially connect up performance venues in the city.

Target Milestones

- 5G festival programme confirmed – June 2021
- 5G Festival delivered – March 2022

70

Black Rock - Brighton



also provide a much needed “uplift” for the area in the interim. New infrastructure and a more developable site, will be accompanied by A temporary events space to support Covid recovery and a new temporary BMX pump track. A new play area and restored Reading room and Temple will also create more of a destination for visitors and residents. Long term development will be governed by a Development Brief which will be progressed during 2021/22.

Key Facts

Delivery Partners: Brighton and Hove City Council Major Projects and Regeneration Team are leading the project..

Funding (all years)

Total LGF Funding	£12.11m - underway
Total Public Funding	£12.611
Total Private Funding	Subject to final Business Case
Total Other Funding	£600k S106
Total Funding	£12.611m

Outputs

A revised economic impact assessment is currently underway to assess final outputs for the redeveloped Black Rock Site under a range of future scenarios. These will be included in the next update.

What happened in the last period?

Engagement with stakeholders continues and direct communications via Blackrockcommunity.com website is ongoing.

The local wildlife site has now been relocated for the first phase of the new vegetated shingle programme. 2nd and 3rd phases in the Autumn will use seed plugs from Millenium Seed Bank and original sea kale growth from LWS.

A short film to describe this has been launched on the website.

Aims & Objectives

The scope and outputs for the Waterfront project have now evolved in to two projects, with the agreement of the Local Enterprise Partnership. A revised series of outputs has been agreed for the Black Rock project which focus upon two key phases of enabling (underway) and future permanent development (to be progressed with a target of 2026 for completion). See alternative for summary of Waterfront project (below).

The aim of the project to regenerate the Black Rock site is now underway, with a successful planning application achieved in June 2020 and 4 works packages at various stages of contractual commitment. The first two works packages, to deliver improvements to Dukes Mound junctions and begin work to the new beach boardwalk, have appointed contractor’s and are underway. The Sea Wall and Marina Link, followed by the works to existing heritage and Kemptown Gardens will begin in summer 2021.

Completion remains targeted for early summer 2022 when the new event space will open. The Development Brief for the Black Rock site will be developed over the coming 9 months to synchronise with work on the Eastern Seafront Masterplan.

The overall objective of the project is to regenerate the Black Rock site. A package of improvement works will unlock and de-risk the site for a future development but will

A future support and maintenance plan has also been put in place to support growth of green wall adjacent to the main road to prevent growth into the carriageway.

Revised S278 Drawings have been issued to Highways for a formal Approval and these have been approved.

The amended location of the Classroom has also been approved via Non-material amendment, to avoid unresolvable issues with Southern Water's Easement.

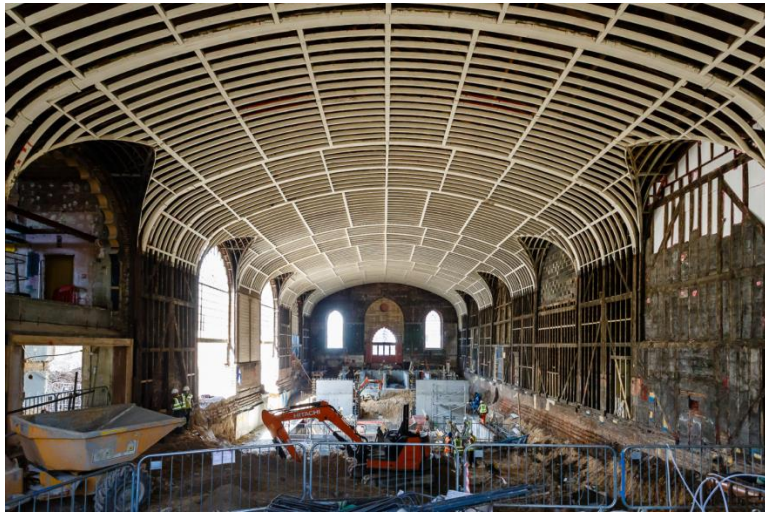
The tender for the link road (Package 3) is due back in mid July.

There have been some issues with regard to programme in relation to availability of materials (composite decking) and longer lead in times for steel and concrete. A final programme for all phases will be confirmed once final package is awarded in August 21. Current programme is working well with no major issues reported.

Target Milestones

- Planning application submission – February 2020 Achieved
- Planning consent – June 2020 Achieved
- Commence start on site – Sept/Oct 2020 3 months behind but now achieved
- Phased Completion – November 2021 – May 2022

Heritage Centre Stage - Brighton



Funding (all years)

Total LGF Funding	£3.00m
Total Public Funding	£21.70m
Total Private Funding	£5.70m
Total Other Funding	£0.00m
Total Funding	£30.40m

Outputs

Employment: created and/or safeguarded - 337

Businesses assisted: financial and non-financial - 624

New floor space constructed/refurbished: learning - 157 m² new floor space constructed/refurbished, Commercial - 2,652 m²

Carbon reduction 39.961 tonnes of CO₂.

What happened in the last period?

The Council's appointed Management Contractor, Westridge Construction Limited, has completed remedial works to achieve weatherproof buildings. All structural remedial works to the 200 year-old Corn Exchange timber frame and roofing works have been completed to secure the building envelope. Finishing and completion works are progressing with the installation of the Corn Exchange oak wall boarding substantially completed. Covid-19 and possibly Brexit appear to be impacting availability of materials with longer delivery times and further delays remain a risk. On site measures including physical distancing, track and trace venue check-in, increased cleaning regime and visitors asked to wear facemasks are in place. Practical Completion is now anticipated in April 2022.

Target Milestones

End Date: April 2022

Aims & Objectives

New Business Model & Commercial Strategy that increases future resilience by improving commercial performance and reducing running costs;

- Enhanced contribution to Brighton's cultural tourism by a strengthened City Centre & Cultural Quarter offer
- Returning the Royal Pavilion Estate to a world class heritage destination & protecting the heritage
- Achieving the long-term vision for both organisations
- Evidence-based improved Visitor/ Audience experience, and improved learning, access & participation).

Key Facts

Delivery Partners: Brighton & Hove City Council & Brighton Dome & Brighton Festival

New England House - Brighton



Funding (all years)

Total LGF Funding	n/a
Total Public Funding	11.1 million
Total Private Funding	n/a
Total Other Funding	n/a
Total Funding	n/a

Outputs

Upgrade building, including providing a net additional 7,090m² of new employment floor-space. Following the land deal with Legal & General on the adjacent Longley Industrial Estate, some of this City Deal floorspace output will provided on the Longley site, with the remainder forming part of a proposed extension to New England House.

What happened in the last period?

Design work continues to be on hold to allow for completion of all necessary survey work. Design work should recommence in September when this work has been completed.

Areport has been received concerning the advised specification for the replacement façade. This will form the basis for façade designs.

Target Milestones

- Planning application: May 2022
- Commence works on site: Start 2024
- End DateMid 2025.

Aims & Objectives

Upgrade and expand New England House so that it becomes a credible and highly visible hub for Greater Brighton's streative, digital and IT (CDIT) businesses.

Key Facts

New England House (NEH) is a business centre, built by the local authority in the early 1960s to provide workspace for industrial businesses. Over time, it has been subdivided ito around 120 units. It is actively marketed as a centre for CDIT businesses and is much in demand for its relatively affordable workspace.

The building is in urgent need of refurbishment – especially its exterior. Under the Greater Brighton City Deal, BHCC was awarded £4.9 million in 2014 towards the refurbishment and expansion of NEH to consolidate its role as a flagship for the city's CDIT sector.

Delivery Partners: Brighton & Hove City Council

New Monks Farm - Shoreham-By-Sea



Aims & Objectives

The project is to develop a strategic employment and housing growth centre in Shoreham. Its main components are: (a) The provision of a new and improved signalised 6-arm junction on the A27 which will unlock housing and employment space by allowing access to and from the wider area and the specific development sites; (b) The building of 600 new homes and 10,000m² employment floor-space at New Monks Farm.

Key Facts

Delivery Partners: New Monks Farm Development Ltd, Highways England, West Sussex County Council (WSCC) and Adur District Council (ADC).

Funding (all years)

Total LGF Funding	£5.70m
Total Public Funding	£5.7m
Total Private Funding	£144m
Total Funding	£150m

Outputs

1. A £150 million capital investment;
2. The delivery of 600 new homes, 30% of which will be affordable;
3. 876 gross new jobs;
4. £2.8m in public sector receipts from council tax revenues, new homes bonus and new business rates; and £11.5m additional annual GVA to the Adur economy

What happened in the last period?

There has been no update in 2021. The last report is as follows:

ADC, WSCC, and developers finalised the S106 agreement and planning decision letter was issued on 06/02/2020

Works continue on site on flood drainage, remediation, and ground preparation works for the development.

Target Milestones

Commence On Site: Spring 2020

Delivery of New Junction to the A27: December 2022

Completion of Development: December 2028

Plus X – Brighton



Aims & Objectives

The 'Plus X' seven storey innovation hub is a U+I Plc concept, a model they have delivered successfully elsewhere. As a key element of the comprehensive mixed-use redevelopment it provides a unique, high quality workspace model, tailored to the unique needs of Brighton's creative and entrepreneurial businesses, particularly those designing and making physical products. It aims to be somewhere inspiring, functional, sustainable and flexible in its design. It is an innovative provision of shared workspaces and facilities that promote collaboration and facilitate serendipity. The shared spaces range from events spaces to prototyping labs, meeting rooms and cafe/break out spaces, something that will attract both small and larger tenants.

Key Facts

Delivery Partners: Brighton & Hove City Council (Delivery Body), U+I Group Plc (Developer) and University of Brighton (together the partners in the overall mixed-use development across the combined sites).

Funding (all years)

Total LGF Funding	£7.7m
Total Public Funding	£0.00m
Total Private Funding	£12m
Total Funding	£19.7m

Outputs

Contractual outputs: 4,910m² of new employment space, 517m² of high specification prototyping labs/workshops, 100 onsite jobs, £5.427m of match funding.

Non-contractual outputs: 200 other jobs, £250,000 follow-on investment, 141 businesses supported.

What happened in the last period?

Plus X remained operational, promoting its many facilities and continuing to build up membership with a variety of packages available. The Brighton Research Innovation Technology Exchange (BRITE) programme continued and is taking members. BRITE is a business innovation programme for ambitious and established businesses primarily based in the Coast to Capital Local Enterprise Partnership region. Other elements of the comprehensive redevelopment reached an advanced stage. Construction of the residential buildings continued, with the cladding of some of the blocks and piling works for the final block completed. The University of Brighton's adjacent development also progressed well. The main structures of all five towers are complete and the new academic building is almost finished. Landscaping works including the construction of a new pedestrianised square, planting, and new staircase are ongoing. A lead contractor has been appointed to construct the accessible pedestrian bridge which will span the Lewes Road.

Target Milestones – Complete development End Date: Dec. 2022.

Railway Quay - Newhaven



Funding (all years)

Total LGF Funding	£1.5m
Total Public Funding	TBC
Total Private Funding	TBC
Total Other Funding	TBC
Total Funding	TBC

Outputs

New commercial floor-space, job creation and land remediation. Details currently being finalised.

What happened in the last period?

Flood defence works on site now completed and negotiations underway with existing tenant re: relocation. Initial masterplan has been prepared and discussions undertaken with potential tenants. LDC has secured £1.3m from the Getting Building Fund to convert the former UTC building into a maritime and sustainable technology hub, offering education / training space and commercial facilities for SME's. Discussions with DfE are ongoing around lease arrangements. This has been augmented by a commitment of £500k from LDC towards the estimated £1.8m project costs.

Railway Quay is progressing, with £500k secured from Towns Fund Accelerated Project Funding to deliver The Sidings - offering new visitor, community and sustainability facilities, including a café and active travel hub. Planning consent has been granted and work commenced in early March 2021. First phase of development opened in early June 2021 and has been well received.

Target Milestones

End Date: TBC.

Aims & Objectives

The Newhaven Enterprise Zone (EZ) is a collaboration between Lewes District Council and Coast to Capital LEP that aims to shift the town towards a higher-value economy over the next 25 years. The EZ covers eight key strategic sites (79ha) in a mixture of public and private ownerships, offering a mix of greenfield sites and the opportunity to develop, refurbish and intensify economic activity across a number of brownfield sites formerly used by heavy industry. The focus of the EZ is on growing the emerging 'clean, green and marine' sectors in particular. Over the 25-year lifespan of the EZ, it is estimated that 55,000m² of new commercial floor-space will be created, 15,000m² of existing commercial floor-space will be refurbished. This will create / sustain up to 2,000 FTE jobs.

Key Facts

Delivery Partners: Lewes District Council.

Springman House - Lewes



Aims & Objectives

The project involves the formation of new fire and ambulance station facilities. A key project aim is to deliver modern new premises for both services.

Key Facts

Delivery Partners: Lewes District Council are the lead delivery body in partnership with East Sussex Fire & Rescue Service (ESFRS), Sussex Police and the South East Coast Ambulance Service.

Funding (all years)

Total LGF Funding	£2.00m
Total Public Funding	£4.34m
Total Private Funding	£0.00m
Total Other Funding	£0.00m
Total Funding	£6.34m

Outputs

By enabling the development of a new blue light facility on the site of Springman House, this project will unlock the North Street Quarter scheme - a major, strategic mixed-use development in Lewes. Relocating the Community Fire Station from its existing premises on North Street, Lewes will enable the delivery of new homes and commercial floor-space through the North Street Quarter (NSQ) regeneration scheme, and enable Lewes’ “blue light” services to be co-located.

What happened in the last period?

Following the purchase of the site by Lewes District Council, plans were drawn up with the East Sussex Fire and Rescue Service Sussex Police and the South East Coast Ambulance Service.

NSQL, the majority landowner at the NSQ site, has now sold its land to the developer – Human Nature. In December 2020, the Council’s Cabinet agreed heads of terms for the sale of its own land to this same developer in order that it can comprehensively redevelop the site. Human Nature has confirmed that it will submit a new planning application for the NSQ and the Council is now liaising with the developer to understand its plans and timescales for the site, including the fire station.

Target Milestones

End Date: To be confirmed, subject to Human Nature’s programme including planning.

Teville Gate – Worthing



Teville Gate House Construction 12/12/2019

Aims & Objectives

Teville Gate (TG) forms part of the Worthing Central Programme (Phase 1) to transform key brownfield sites in Worthing town centre. This project will facilitate the redevelopment of the site by undertaking site preparation works, consisting of the demolition of all buildings within the redline and provision of a temporary surface car park. Thereafter the Council will continue to support the freeholders, Mosaic Global Investments (Mosaic) and Hanson Development to develop out the scheme for office, residential and commercial.

Key Facts

Delivery Partners: Worthing Borough Council, Mosaic Global Investments, Coast to Capital LEP, Hanson Developments & HMRC, Homes England

Funding (all years)

Total LGF Funding	£2.09m
Total Public Funding	£2.0m
Total Private Funding	£79m (wider site) £32m (Teville Gate House)
Total Funding	£81.00m

Outputs

(a) 375 new homes (b) 3,410sqm of commercial floor-space (restaurants, cafes and on-site gym) (c) 6,740sqm of retail floor-space (state of the art supermarket) (d) 493 gross jobs (net jobs 314) (e) Modern car parking infrastructure (over 160 spaces for residents and visitor use) (f) New public realm (approx. 4,000sqm, creating an improved public corridor from Worthing station to the town centre). 70,000sqft office building at Teville Gate House for HMRC.

What happened in the last period?

There has been no update in 2021. The last report is as follows:

1. Construction commenced on new office building for Teville Gate House and topping-out took place on 01/04/2020.
2. Mosaic Capital’s planning application was considered by planning committee on 04/03/2020 and resolution to grant permission subject to S106
3. Homes England provided a letter committing to support the project with funding of £6m for affordable homes.

Target Milestones

Planning Application by Mosaic Determined: March 2020

Main Site Commencement: Spring/Summer 2020

HMRC Office Building Completed: December 2020

Union Place – Worthing



Funding

Total LGF Funding	£3.60m
Total Public Funding	£5m
Total Private Funding	£31.4m
Total Other Funding	TBC
Estimated GDV	£70m

Outputs

- 169 - New Homes – 30% affordable
- 610sqm - Commercial Space
- 90 - Guest room Hotel
- 3 /4 Screen – Cinema
- 1072sqm- Flexible Cultural Space
- 245 – Parking spaces

What happened in the last period?

There has been no update for the period May to July 2021. The previous update was as follows:

- S106 agreement drafted,
- Appointment of Agent to market and dispose of site
- Disposal strategy reaffirmed

Target Milestones

- Undertaking Marketing of site – April 2021
- Review and shortlist developer options – Summer 2021
- Appoint preferred developer - Summer 2021
- Detailed planning application expected Autumn/Winter 2021

Aims & Objectives

Union Place (UP) forms part of the Worthing Central Programme (Phase 1) to regenerate key brownfield sites in Worthing town centre. The Council has entered into a land pooling agreement for the site with partners London and Continental Railways (LCR). The partners have prepared a development strategy for the sites which has been approved at JSC. The development strategy could include direct delivery or selling the consented scheme to a developer.

Key Facts

Delivery Partners: Worthing Borough Council (WBC), London & Continental Railways, Coast to Capital LEP.

Valley Gardens Phase 3 – Brighton



Proposed scheme

Aims & Objectives

Simplification of traffic network, provision of 'public transport corridor' to the west with general traffic on the western corridor. Enhanced public realm, gardens and materials throughout. The scheme aims to contribute to improved air quality, safety, accessibility, connectivity, improve efficiency and upgrade signals at junctions. Reduce street clutter and provide enhanced greenspace for public enjoyment.

Key Facts

Delivery Partners: C2C Local Enterprise Partnership

Outputs

Match Funding (BHCC) £1.712m, Local Funding £0.414, Total resurfaced roads - 1,588m, Total length of cycle ways - 670m, Area of land experiencing flooding - 63,866m².

Funding (all years)

Total LGF Funding	£6.00m
Total Public Funding	£1.84m
Total Private Funding	£0.0m
Total Other Funding	£0.00m
Total Funding	£7.84m

What happened in the last period?

There has been no update for the quarter May to July 2021. The previous update was as follows:

The third public consultation exercise for Valley Gardens Phase 3 has completed in late 2020, which will inform the detailed design stage.

Following a tendering process that completed in late 2020 through the council's new Transport Professional Services Framework the next stage of the scheme design commenced in January 2021.

It is now planned for the detailed design of the scheme and the construction contract procurement to be completed by end of this calendar year.

Target Milestones

End Date: Autumn 2022

Western Harbour Arm – Shoreham-By-Sea



Proposed scheme

Aims & Objectives

A new flood defence wall and cyclepath to be constructed in Shoreham adjacent to the A259 on Brighton Road where the flood defence is at its most vulnerable point for flooding. ADC purchased a 3.5m strip of land off Sussex Yacht Club through grant funding from Coast 2 Capital LEP. The sale of the land would enable the yacht club to build a new club house and allow the council to demolish the redundant club house where the new flood wall will be located.

Key Facts

Delivery Partners: Adur District Council (ADC), Environment Agency and Sussex Yacht Club, Shoreham Harbour Partnership.

Funding (all years)

Total LGF Funding:	£3.50m
Total Public Funding:	£1.14m
Total Private Funding:	£0.00m
Total Other Funding:	£0.00m
Total Funding:	£4.64m

Outputs

- Flood defence scheme to protect residents and businesses
- Cycle path
- New yacht club for Shoreham.

What happened in the last period?

There has been no update for the period May to July 2021. The previous update was as follows:

- New Sussex Yacht Club building completed
- SYC served notice to vacate redundant Yacht Club in April
- Demolition contract being procured

Target Milestones

- Demolition of redundant Yacht Club June 2021
- Commencement of Flood Defence construction Summer 2021
- Completion Summer 2022

Newhaven Flood Alleviation Scheme



Funding (all years)

Total LGF Funding	£3.00m
Total Public Funding	£14.50m
Total Private Funding	£0.00m
Total Other Funding	£0.00m
Total Funding	£17.50m

Outputs

3km of flood defences on the east and west banks of the River Ouse comprising concrete walls, earth embankments, sheet steel piles, flood gates.

What happened in the last period?

Works are now complete. A final rail possession took place on 20 June 2021, with works including installation and testing of new power cables and signalling tests to ensure the rail flood barrier is fully functional. A trial barrier deployment is scheduled for November to ensure no outstanding issues.

Minor snagging work is now being planned.

Target Milestones

N/A.

Aims & Objectives

Build physical infrastructure to provide protection from tidal flooding up to a 1 in 200 year event for 431 homes, 390 businesses, rail and road infrastructure and in addition facilitate regeneration and development under the auspices of the Newhaven Enterprise Zone

Key Facts

Delivery Partners: Environment Agency, Lewes DC, Coast to Capital LEP, SELEP.

Port Access Road - Newhaven



Outputs

Construction of the Newhaven Port Access Road from the Pargut roundabout to the Port roundabout, unlocking new employment land at East Quay within Newhaven Port.

What happened in the last period?

Construction commenced early January 2019, with practical completion now achieved. The next phase of development will be the construction of two short link roads to provide access to different areas of Newhaven Port. This work has now started but is being funded through private sector match, not through the Investment Programme.

Target Milestones

N/A – Project Complete.

Aims & Objectives

Construction of a new road into Newhaven Port.

Comprising approx. 650m of new road, including a new 3 span bridge over the Newhaven to Seaford railway line and Mill Creek, and associated landscaping/environmental works.

Key Facts

Delivery Partners: East Sussex County Council.

Funding (all years)

Total LGF Funding	£10.00m
Total Public Funding	£13.27m
Total Private Funding	£0.00m
Total Other Funding	£0.00m
Total Funding	£23.27m